

MailRoom ToolKit Architect

Address correction and postal presorting for your database, website or application

MailRoom ToolKit Architect offers a complete set of tools you can use to develop the integrated address management solution that meets your unique needs. Validate addresses at point-of-entry on your website. Clean and update addresses in any database. Integrate postal presorting into your custom application. Architect works with nearly any application that collects, stores or uses address data.

Integrated Address Management

Your organization relies upon correct address data. Whether your activity is direct marketing, order fulfillment or billing, accurate addresses are essential for best results. The negative consequences of incorrect addresses go well beyond delayed mail. Wasted materials, lost opportunities and reduced customer satisfaction plague organizations with poor address quality.

Address Quality Ensures Deliverability

Improving address quality ensures the deliverability of your mail, makes your communications more effective and eliminates considerable waste. In short, it saves your organization money.

- Reduce undeliverable mail — increase ROI on direct mail and communications
- Pay fewer address change fees — shippers can save up to \$10 per package
- Avoid lost or returned packages and mail — improve customer satisfaction

Architect Delivers Address Quality

MailRoom ToolKit Architect integrates with your systems and processes to deliver results throughout your organization. Use Architect to improve address quality at any stage of your operation without import/export hassles.

- Validate individual addresses as they are entered into your database
- Correct addresses already in your database
- Update addresses in your database as people and businesses move

Uses for Architect

Data entry

Validate addresses at point-of-entry into your website, call center or CRM

Database cleansing

Correct and update addresses to protect your investment in lead-generation programs

Rapid addressing

Enter addresses into your current application with fewer keystrokes

Custom applications

Build address management tools into your product — deliver more value to your customers

Variable data printing

Integrate into document processing and increase your savings with address verification and postage discounts

Features

Built on .NET and COM for easy integration and maintenance, MailRoom ToolKit Architect delivers address correction, USPS® approved postal presorting and change-of-address processing. A full-featured Developer Center and sample code make it easy to implement money-saving solutions in any application or environment.

Address Correction

Integrate address validation and correction with advanced functionality: unattended processing, distributed processing in multi-server environments and multi-threading. Use CASS Certified™ Architect to standardize abbreviations and address formats, correct the spelling of streets and cities, verify deliverability and add missing postal data including nine-digit ZIP® codes, carrier route numbers and more.

Real-Time Move Update Service

Maintain contact with your clients and prospects when they move. Update the addresses of people and businesses in your database with our built-in real-time* 48-month NCOA^{Link}® service.

Client/Server design

Scalable and compatible with a variety of platforms and environments, configure MailRoom ToolKit Architect to support any number of users.

Website Development

Plug Architect directly into ASP and ASP.NET pages or use TCP/IP to communicate with other platforms.

PAVE™ Certified Postal Presorting

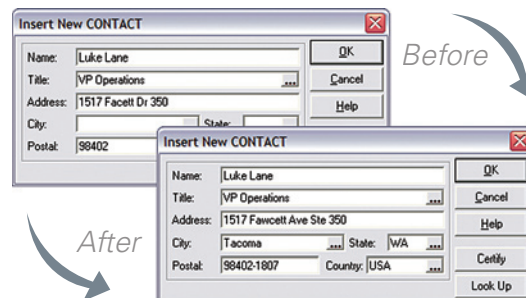
Get the best possible postage rates on volume mailings. Sort and generate all necessary USPS documentation for First-Class Mail®, Standard Mail® and Periodicals. Optional advanced sorts include Package Services, Mixed Weights and Palletization.

Additional Features Available

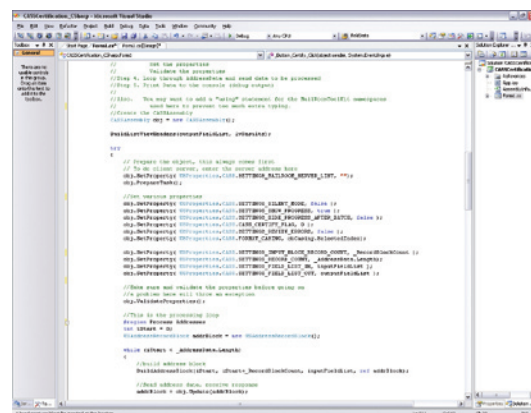
Extend the capabilities of MailRoom ToolKit Architect as your business needs grow. Additional data enhancement options and advanced presorts meet the most demanding requirements.



Integrate address validation and correction into your system with advanced functionality



Complete and validate addresses in your application's data entry forms



Sample code and technical notes included with MailRoom ToolKit Architect simplify integration with your application or database

*Satori Software receives weekly NCOA^{Link} updates.

Simply Powerful Address Management Tools

The Developer Center Ensures Flexible and Easy Implementation

Built to make integration and maintenance easy, MailRoom ToolKit Architect features the latest cutting edge technologies, including client/server architecture and automatic updating of clients.

Surprisingly little code needs to be written in order to use the full features of Architect. Components are available in .NET, COM, ActiveX and DLLs. And Architect can interface with virtually any environment through TCP/IP. The MailRoom ToolKit Developer Center includes detailed documentation and sample code, making it easy to add Architect to your application or website.

Some Supported Languages and Environments

- C/C++ (32-bit)
- C#/VB .NET
- Java
- Visual Basic (32-bit); VBA
- Visual FoxPro 4.0 or later
- Microsoft SQL & Access
- Oracle, Siebel & Other COM-compatible applications
- SalesLogix
- Websites

International Datasets

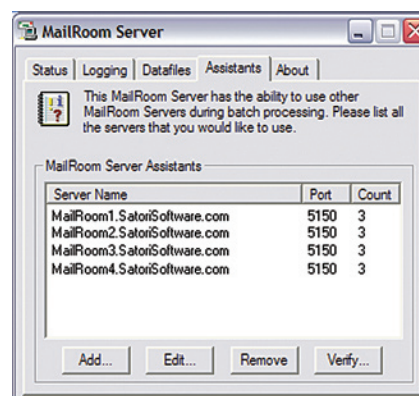
Organizations that collect and maintain international addresses may also be able to use MailRoom ToolKit Architect for quick address entry, to verify addresses and to sort for postal discounts. MailRoom ToolKit Architect products provide unique wizards for each supported international dataset which use appropriate local terminology, e.g., ZIP Code™ or Postcode, state or province, etc.

Supported International Datasets

United States
Australia
Canada
United Kingdom

Scale Using MailRoom Server

MailRoom ToolKit Architect includes our powerful MailRoom Server. The scalable MailRoom Server can meet the needs of any size organization, including enterprises with thousands of concurrent users. The MailRoom Server design gives you accelerated server-side processing, multi-processor and load-balancing support, multi-thread ability, server and performance monitoring tools and more.



Add servers as needed to support a virtually unlimited number of address management processes.