

# BULK MAILER®

## Powerfully Advanced Mailing Software

Make your mailing operation much more productive with Bulk Mailer® — prepare USPS® compliant mailings faster and more easily. Achieve increased mail deliverability and the lowest postage rates all while avoiding the aggravation of deciphering complex postal regulations. Superior productivity features include wizard-based processes, reusable templates, comprehensive data exchange and an unmatched mail piece designer. This next generation of the Bulk Mailer series sports a sophisticated new interface and the option to upgrade to a Microsoft® SQL-based database for faster performance with the largest address data files.

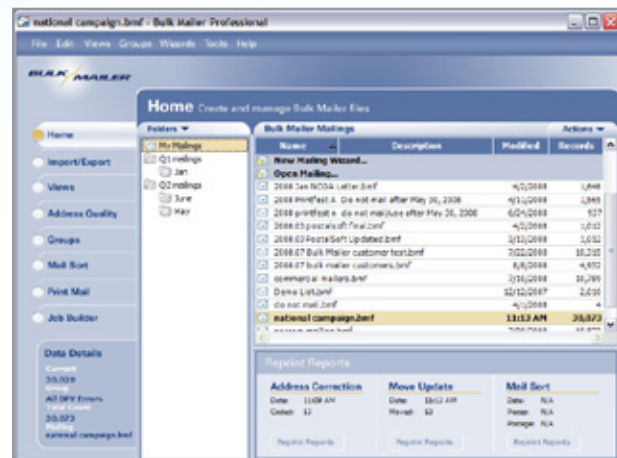
### Unsurpassed Mail Preparation

Bulk Mailer is full-featured, remarkably productive mailing software.

- CASS Certified™ for address correction
- PAVE™ certified postal presorting
- Real-time\* NCOALink® service
- Custom high-speed printer support
- Optional advanced presorts and more

\*Satori Software receives weekly NCOALink updates.

### Innovative Graphical Interface



The innovative interface divides mailing preparation into a series of wizard-driven tasks for risk-free processing

# LIST MANAGEMENT

## Increase Quality, Increase Results

Bulk Mailer address quality tools ensure that you are using the best data for mailing and qualify those mailings for the lowest postage rates. Increased address quality delivers more mail, offers better return on investment and improves overall satisfaction with direct mail. Bimonthly updates, sent on DVDs and available for download, provide the latest USPS address management files.

### CASS Certified for Address Correction

Standardize abbreviations and address formats to USPS guidelines, correct the spelling of streets and cities and verify deliverability, includes DPV®, LACSLink® and SuiteLink™ processing. Add missing postal data including nine-digit ZIP® codes, eLOT® and carrier route numbers, delivery points and more; then generate USPS Form 3553.

### Real-Time Move Update Service

Use our built-in Move Update service to process lists against the full 48-month NCOALink data set in real-time. There's no manual import/export and no messy data merge. The only change-of-address method that updates address lists BEFORE the mail is printed and sent, NCOALink processing meets USPS Move Update requirements for First-Class Mail® and Standard Mail® discounts.

### List Cleansing

The included Duplication Search wizard offers multiple search options and field combinations for precise results. Upgrade to Merge/Purge to combine, compare and eliminate duplicates from disparate list types. Process lists against a suppression list to meet Do-Not-Mail requirements.

## Import and Export Files

Work with a wide variety of address files without hassle.

- Supported file formats include comma or tab delimited, fixed Length, dBase, XML and Microsoft Access and Excel
- Intelligent field mapping automatically suggests matches
- Increase productivity, save settings for similar data files in templates

## View and Edit Records

List Views present addresses in a spreadsheet for quick review. Spot anomalies and validate the results of group criteria. Update, split or combine fields in all active records. Cut, copy and paste groups of records — even to and from Microsoft Excel.

Detail Views offer organized access to data fields in an address-card format. Easily add, validate and update individual records.

## Groups

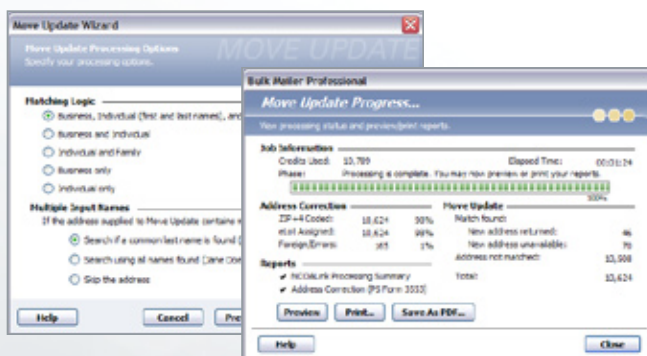
Easily limit a mailing to a subset of your list. Define criteria and sort options for a more targeted mailing.

- Any field or set of fields may be used to define a group
- Conditions include custom, predefined and data sampling
- Preset groups include *All Corrected Records*, *All Move Update Records* and more

## Address Quality Wizards



Access easy-to-use wizards for Address Correction, Move Update, Duplication Search and Merge/Purge



The Move Update wizard processes lists against the 48-month NCOALink data set via the Internet

# MAILING PREPARATION

## Full-featured, USPS PAVE Certified Presorting

Sort address lists for the lowest possible postal rates and generate all required USPS documentation, reports and postage statements. The Mail Sort wizard makes presorting easy for everyone from the novice to the seasoned expert.

### Mail Sort Wizard Features

- First-Class Mail, Standard Mail and Periodicals presorts
- SCF, BMC, ADC and DDU entry point discounts
- Management of multiple mailing permits
- All required USPS documentation: Qualification Report, Postage Statement forms 3602, 3541 and 3600, and others
- Advanced settings for minimum or maximum pieces per container, type of tray and maximum sack weight
- Generates barcoded sack and tray tags
- A convenient settings report
- Append a presort ID and other mailing data for use in other environments
- Presort add-ons include Package Services, Mixed Weights and Palletization

## State-of-the-Art, Printing Control

Take full advantage of your address printer — Bulk Mailer provides built-in support for model specific features. Address printing features include barcoding, an optional endorsement line, compressed fields and an intelligent address block. It also includes support for fonts, images — for example, your logo — grids, package spacers and more.

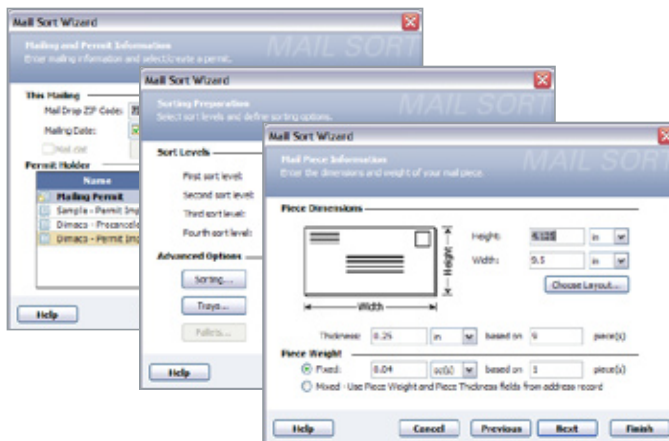
### Industry-Leading Layout Design

- Precisely set label and envelope dimensions
- Select Intelligent Mail® or POSTNET™ barcoding
- Specify when to print each element
  - Always
  - On the first or last piece within a group or container
  - According to a conditional statement
- Draw lines, rectangles and circles

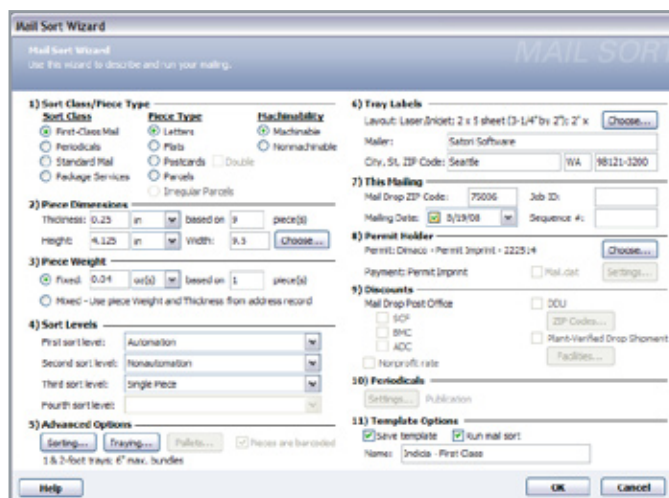
### Custom Drivers for High-Speed Address Printers

Our custom drivers eliminate the need to manually program your printer. Printer specific controls include DPI, belt speed, page size and more. Print directly to popular models including Astrojet, Bryce, Hasler, Neopost, RENA, Secap and others, or output a print file when needed.

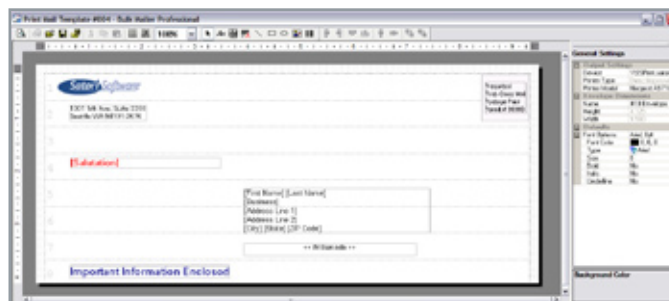
## Mail Sort Wizard



The Mail Sort wizard presents presort settings in a step-by-step format, or in a single window for power users



## Graphical Mail Piece Designer



The mail piece designer offers full graphics support and even shows the print zones supported by your address printer



## ADVANCED FEATURES AND CAPABILITIES

### Combine Tasks for Automated Processing

Available with Bulk Mailer Professional and Business, Job Builder allows you to increase productivity by combining a series of template-based tasks into a complete mailing job.

Be more productive with Job Builder.

- Include any task defined by a template
- Set a job to pause after the completion of any task
- Edit job templates as needs change

### High-Performance, Multiuser Architecture

Built for the highest-volume mailers, Bulk Mailer Business offers advanced capabilities that offer faster performance with large address files and support team-based processes.

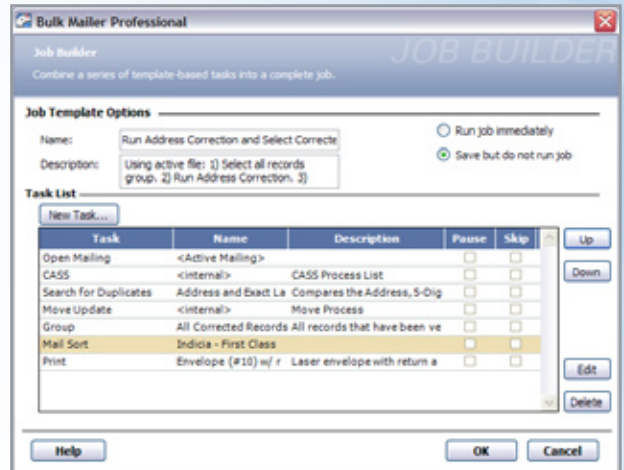
- Integrated Microsoft SQL-based database
- Multiuser environment supports template sharing
- Unlimited number of user-defined fields
- Package mailings with reports for backup or transfer
- Archive older mailings

### Advanced Presorts, Data Sets and Utilities

Expand the capabilities of Bulk Mailer as your business grows. Add-ons enable Bulk Mailer to meet the most demanding mailing requirements.

- **Advanced Presorting**  
Package Services, Mixed Weights or Palletization
- **Data Enhancement**  
Move Update credits, Geocode, RDI™ Interface or Monthly Updates
- **Utilities**  
Merge/Purge, Mail.dat or Move Update server

### Job Builder



Use Job Builder to automate the preparation of any mailing

### Multiuser Access



The multiuser interface allows you to see which users are online each time you log into Bulk Mailer Business

©2008 Satori Software, Inc. All rights reserved. Bulk Mailer and Satori Software are registered trademarks of Satori Software, Inc.

Satori Software is a non-exclusive Full Service Provider and RDI Licensee of the United States Postal Service®. The following trademarks are owned by the United States Postal Service: CASS Certified, PAVE, First-Class Mail, Standard Mail, Intelligent Mail, RDI, eLOT, POSTNET, DPV, USPS, NCOA<sup>Link</sup>, Suite<sup>Link</sup>, LACS<sup>Link</sup>, ZIP and United States Postal Service. AD#14.08

### Satori Software, Inc.

1301 5th Ave, Ste 2200  
Seattle, WA 98101-2676  
Sales 800.553.6477  
Fax 206.357.3901

[www.satorisoftware.com](http://www.satorisoftware.com)